



Westbreen Primary School

Newsletter

Principal: Tony Cerra

Tel: 9306 9481

Email: westbreen.ps@education.vic.gov.au

Assistant Principal: Jason Kenny

Fax: 9304 1391

www.westbreenps.vic.edu.au

Volume 8

Tuesday 19th March 2024

Principal's Message

Dear Parents and Guardians

PARENT / GUARDIAN INVOLVEMENT - THE SECRET INGREDIENT TO CHILDREN'S SCHOOL SUCCESS

Positive parent / guardian participation demonstrates to children that you value learning as well as holding our school in high regard.

If you want the best outcomes for your child, it is important that you become involved in as many aspects of your child's education as practical.

The involvement of parents /guardians helps break down the mystique about school that can exist for some children. Their chances of success are better when they see school as an extension of home rather than merely an institution for learning.

Participating as a parent / guardian can be much broader than helping out in the classroom. There is a range of simple things you can do at home that will assist staff to maximise the learning of your child. These include talking with your child about their day, hearing your child read, helping with homework, and making sure kids go off to school happy, healthy and having had plenty of sleep.

Here are some more ideas to help you participate in your child's education and the programs we offer for Parents / Guardians willing and able to participate in the life of our school.

- Classroom Support
- Reading Support
- Literacy & Numeracy Activities
- Oral Language Program for Foundation Students
- P.M.P for Foundation Students
- Library Support
- Administrative Tasks
- Canteen / Breakfast Club
- Westbreen Community Group
- General Gardening
- Vegetable Garden
- STRIVE program groups
- Volunteering to attend excursions

If you would like to volunteer, please contact Miss Kerry: kerry.parfett@education.vic.gov.au

**THURSDAY 28TH MARCH LAST DAY OF
TERM 1 FINISHING @ 2:15pm**



SCHOOL-WIDE POSITIVE BEHAVIOURS

School-wide positive behaviour support (SWPBS) is a framework that brings together school communities to develop positive, safe, supportive learning cultures. SWPBS assists schools to improve social, emotional, behavioural, and academic outcomes for children and young people.

Our School-Wide Positive Behaviours are linked to our school values. Students are made aware of the behaviours that link to the value and how they look in different settings within the school.

Please see further in the newsletter for a copy of our school-wide positive behaviours. We encourage all families to reinforce these with their child/children.

RAMADAN

We would like to wish our Westbreen families observing Ramadan a blessed and peaceful month of fasting. During this time, those observing Ramadan fast during the sunlight hours. The pre-dawn meal is called the “Suhoor”, while the fast is broken at dusk with the “Iftar”, starting with a few sips of water and some dates.

VOLUNTEERS REQUIRED

Tomorrow afternoon we are having some softfall mulch delivered for our playgrounds. We are asking for volunteers who could assist from 3:20pm-3:50pm in spreading mulch on the playground. Rakes and shovels to be supplied. If you can help, we’ll see you there at 3:20pm.

Have a wonderful week!

Jason Kenny

Acting Principal

ASSEMBLY OF STUDENT LEADERSHIP BADGES

Student leadership badges will be presented to the 2024 Class Captains and Junior School Councillors at school assembly on **Wednesday, the 20th of March**. We wish to invite parents and carers to be in attendance for the presentation.

SCHOOL PHOTO CODE ON ENVELOPES
IS INCORRECT THE CORRECT CODE IS
5YM TXF 14K Advancelife apologies for
inconvenience.

FAMILY TIME

Tomorrow in family time we will be playing with Legos 3:15pm to 4:15pm in specialist building.

	Respect	Care & Compassion	Co-operation	Achievement	Responsibility
Oval	We share the space and make sure everyone is safe. We leave rocks on the ground.	We include others in activities. We watch out for others playing in the same space. We help each other get up when we fall over.	We share the space and the equipment. We leave sport equipment that we haven't borrowed ourselves alone.	We demonstrate good sportsmanship. Keep it clean of rubbish.	Rubbish goes in the bin. We tell a teacher if we see graffiti or unsafe behaviour. We stay within the school boundaries. We leave equipment in its place. We return our sport equipment.
Basketball/Bat-tennis area and playgrounds	We use the courts for their intended purposes. We take care of the equipment we are using.	We take turns so that everyone has a go.	We play together as a team. We share the space fairly.	We help each other to improve our skills. We have fun!	We use equipment for their intended purposes We go down the slide one at a time and feet first.
Hard surfaces between the buildings and the ovals.	We walk calmly and quietly. We hold on to our sports equipment until we get to the oval or synthetic grass courts area. Chess pieces are used only to play Chess.	We look out for others who are also using the spaces. We help others when they need it.	We don't play at the front of the school or in 'out of bounds' areas.	We walk and play sensibly and responsibly.	Balls do not get kicked in these areas. We put rubbish in the bins. Bikes and scooters are walked.
Toilets	We leave the toilet area clean, neat and graffiti-free. The toilets are not a play area.	We ensure that everyone has their right to privacy. We have one person per cubicle.	We wait for our partner and we walk back together.	During class time, we go there and return to class as quickly as possible.	We flush the toilets. We wash our hands Toilet paper goes in the toilet. We use the toilets during break times.
Canteen	We are polite and respectful to Canteen staff. We use our manners. We use our inside voices. We eat politely and don't waste food.	We make sure that all students have the chance to be served, especially younger students.	We wait in the line to be served.	We say please and thank you.	Rubbish goes in the bin. We make healthy food choices.
Learning spaces	We let our peers learn in their own way. We listen to other people's ideas and suggestions. We use a polite voice. We use equipment with care.	We help others. We are mindful of our noise levels, especially in shared spaces.	We put our hand up and let others have a turn. Show whole body listening.	We put in 100% effort into all our work.	We remove hats/hoodies as we enter the classroom. At the end of breaks we quietly line up outside our classrooms. We arrive at class on time and take our seats quickly. We stay where the teacher can see us. We concentrate on our learning.
Excursions	We respect the property of others. We take care of our own belongings. We choose our words carefully and use our manners. We respect that we are sharing these spaces with the general public.	We treat all others as we would like to be treated. We show our pride in our school by being on our best behaviour.	We take turns and make sure everyone is included. We help each other to stay together with the teacher and focus on learning.	We gain valuable new experiences and knowledge. We uphold our School Values.	We follow directions and instructions from adults. We bring a note if we are not wearing our school uniform.
Pick up/Drop off areas	We are polite to others in the spaces. We behave in a way that reflects our school values, reflects well on ourselves and our school.	No sports equipment is used at the Big W before or after school.	We sit down and wait patiently for our parents/carers.	We arrive at school and leave school safely.	We use the school crossings to cross West Street and/or Pascoe Street. We sit and wait at the Big W if we are being picked up by car.
Team Westbreen	We speak respectfully to others, no put downs, racist comments or swearing. We only speak English when we are together.	We look after each other.	We include others in activities.	We are happy and feel like we belong	We demonstrate our School Values on a daily basis. We treat others the way we want to be treated.

STUDENT OF THE WEEK

FA	Noah Y	For showing all of our school values. Well done Noah. Keep it up!
FE	Ahmed A	For all you amazing pattern learning. Incredible pattern Ahmed!
FS	Jack P	For working hard to learn the letters and sounds. Keep up the great work!
1H	Aria E	For writing an amazing persuasive text and always trying your best in writing class! Well done Aria!
1S	Zoha Q	For being a responsible, kind and helpful member of 1S. Congratulations on becoming a class captain for 2024!
1T	Hanya C	For always being responsible by completing her set tasks with pride.
2F	Ben B	For a fantastic information report on the Growling Grass Frog full of information and writing devices!
2L	Oliver B	For all of your efforts in writing such a detailed information report about a Portuguese Man O'War. Well done Oli!
2V	Quintin L	For always showing care and compassion towards his classmates and being a constant ray of sunshine in 2V!! We love you positivity Quintin!
34C	Muhammad M	For being responsible and reliable ICT monitors by looking after the equipment and supporting others in using it.
34C	Thomas H	For being responsible and reliable ICT monitors by looking after the equipment and supporting others in using it.
3 4H	Subhan A	For always putting in 100% effort into his learning and displaying our value of Care and Compassion. Keep up the amazing work!
3 4O	Agniv D	For being such a polite, cheerful and hardworking member of the grade.
3 4P	Waleed V	For putting his best effort into everything he does – always aiming to achieve his very best. What an outstanding attitude! Well done, Waleed!
3 4Z	Annabel P	For her super effort in practicing renaming numbers using their place value. You are a star!
5 6D	Year 5 students	For their outstanding efforts and focus while sitting their NAPLAN tests. So proud of you!
5 6N	Khayle V	For being a caring and compassionate role model to your foundation buddy. Super job Khayle!
5 6W	Grade 5s	For putting in 100% effort and completing NAPLAN to the best of their abilities. Well done all!
5 6Z	Grade 5s	For there efforts and achievements with completing their NAPLAN testing. Well done.

Please note the above Students of the Week will be presented their certificate at assembly on Wednesday 27th March 2024



EASTER RAFFLE

Westbreen Parents & Friends is excited
to announce its 2024 Easter Raffle!

**FABULOUS HAMPERS & VOUCHERS TO
BE WON, WITH ALL PROCEEDS GOING
BACK TO THE SCHOOL!**

**DRAWN ON WEDNESDAY
27TH MARCH AT ASSEMBLY**

**VOUCHERS INCLUDE MELBOURNE COMEDY FESTIVAL,
COLLINGWOOD CHILDRENS FARM, GOCLIMB, MUSEUMS
VICTORIA AND MUCH MORE!**



**RAFFLES ARE \$1 PER TICKET. ALL
MONIES ARE TO BE RETURNED BY
FRIDAY 22ND MARCH.**





**PRE-ORDER
BY FRIDAY
22ND MARCH
BY QKR! OR
CASH**

2024 HOT CROSS BUN FUNDRAISER

To celebrate the end of term and the start of the holidays, the **Parents & Friends Community Group** are partnering with **O'Heas Bakery in Coburg** for our first fundraiser of 2024. **O'Heas** is the bakery that supply us with the free bread that so many of our community enjoy each Wednesday.

O'Heas Bakery will donate **\$2 from every 6-pack** hot cross bun packet that Westbreen Primary School sells. Each 6 pack of buns costs **\$9.00 each**.

We would prefer orders to be placed via Qkr! our Canteen ordering app, but if you want to pay by cash, please complete the order slip sent on Friday 15 March and return to school with your child.

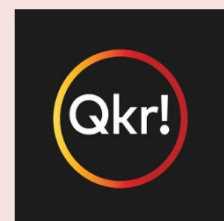
All orders either via **Qkr!** or cash, need to be returned by no later than next **Friday, 22nd March**. Click on **Menu on the Qkr! app** and view **'2024 Hot Cross Bun Fundraiser'**.

Flavours are:

\$9.00 Traditional 6-pack

\$9.00 Choc Chip 6-pack

\$9.00 Fruitless 6-pack



DELIVERY OF YOUR ORDER IS TUESDAY 26TH MARCH.

HARMONY DAY

We come together to celebrate Harmony Day on Thursday the 21st March, 2024. Created in 1999 to celebrate unity and diversity, Harmony Day was originally an Australian celebration but is now marked worldwide. People celebrate the day worldwide by reflecting on the ways we can live in harmony with our neighbours, regardless of our background or circumstances.

Westbreen will celebrate the day with classroom activities and by encouraging students to come dressed in orange.



CAMP SPORTS EXCUSION FUND APPLICATIONS

The Camps, Sports and Excursions Fund helps eligible families to cover the cost of school trips camps and sporting activities.

If you have a valid means—tested concession card, such as a Veterans Affairs Gold Card, Centrelink Health Care Card or Pensioner Concession Card, or are a temporary foster parent, you may be eligible. There is also special consideration category for asylum seeker and refugee families.

Payment amounts this year are \$150.00 for eligible primary school students. Payment are made direct to the school to use towards expenses relating to camps, excursions and sporting activities for the benefit of your child.

If you applied for CSEF through our school last year, you do not need to complete an application from this year, unless there has been a change in your family circumstances.

If you would like to apply for the first time, please contact the school office on 93069481 and ask for an application form or we have some in the stand at the front office.

Check with the school office if you are unsure and please return completed forms to the school as soon as possible with your card so we can photo copy your eligible card.



Visual Arts - Bottle top Mural

Hello Westbreen Community!

I would like to call on families to save **bottle tops** of various **sizes** and **colours**, and to bring them into the school when you have collected at least a zip lock bag full or even a shopping bag full. Bottle tops collected can be given **directly to me (Ms. Mahlis)** when your child attends their art session. The mural project will begin in Term 2.

Also we have received enough Recycling now thank you again for your support.





Volunteering at Team Westbreen

Every year we invite our Westbreen families and community to join us by volunteering at Team Westbreen. We believe that when schools, families and communities work together to support our students it gives them the opportunity to thrive both academically and personally.

To be a volunteer at Team Westbreen there are two things you will need. One is a current Working with Children (WWC) card which is available online at www.workingwithchildren.vic.gov.au/individuals/applicants

There is no cost in getting a Volunteer WWC card. The second is to attend our Volunteer's Induction Program, which involves a short meeting held in the staffroom that explains what and how our program works.

We have lots of ways you can make a difference at Team Westbreen, including:

- · listening to children read
- · going on excursions or helping at incursions
- · helping in the Canteen with Ms Bridget
- · helping at Breakfast club with Ms Jo
- · supporting our teachers and students at Inter-school sports
- · helping at Book Fair with Ms Tamie
- · assisting teachers in making resources for their class
- · covering books for the library
- · being part of our **Parents & Friends Community Group**, helping with:
 - ◆ · Mother's & Father's Day stalls
 - ◆ · Bunnings BBQ
 - ◆ · Fundraising events to be held throughout the year

We understand our families are busy and don't have as much time to help as they may like, so may think it's not worth offering, but could I ask you to chat to me about what may work for you before you cross it off the list. It could be once weekly, fortnightly or monthly, or maybe just every now and again. Any assistance we can get from our families and communities is appreciated, AND our students love having you involved.

Please reach out to me if you would like more information about any of the above. You can chat to me out in the yard, give me a call, pop into the office to speak to me, or email me at kerry.parfett@education.vic.gov.au

To the Owner/Occupier
 Northumberland Rd
 PASCOE VALE VIC 3044

INTERSECTION UPGRADE WORKS – NORTHUMBERLAND RD AT RHODES PDE, PASCOE VALE
Raised Threshold Pedestrian Crossing and Refuge Island Widening Works

Council is writing to inform you of upcoming works in your area involving the installation of a raised pedestrian threshold treatment at the intersection of Northumberland Rd and Rhodes Pde, to improve road safety at the intersection.

The treatment will raise the level of the road where pedestrians cross Northumberland Rd, to the same level as the footpath running along Rhodes Pde/Pascoe St on the southern side. The raised threshold will improve safety by slowing vehicle movements into and out of Northumberland Rd at the intersection and by improving the alignment and visibility of the crossing point for people who walk or ride in the area. The nearby refuge island in Rhodes Pde will also be upgraded so that it can fit a pram or bicycle safely within the refuge island, which is located where people are expected to cross to the existing shared user path alongside the golf course. Please refer to the attached plan (Figure 1) for location of the works.

A suitably qualified contractor, Kaizen Civil Pty Ltd has been appointed, and the works have been scheduled during the school holiday period to attempt to minimise disruption.

Preliminary works will occur on Friday 22 March between 9:30am and 3:30pm where traffic will still be able to use the intersection. The main works to create a raised threshold crossing will commence on Tuesday 2 April 2024.

There will be a full closure of Northumberland Rd at Rhodes Parade between 2 – 11 April with a detour in place via Lake Avenue and advance signs encouraging non-local traffic to seek an alternative route during the works period. All works are expected to be completed by 17 April 2024.

Council and the contractor will minimise disruption to residents and maintain vehicular access to all properties as far as practicable, except if construction and safety issues deem otherwise. Council apologises for any inconvenience and seek your patience and understanding until the road works are completed.

Should you have further questions or concerns please contact Gordon Blake, Acting Project Manager Transport from Council on 9240 1249 or orgblake@merri-bek.vic.gov.au. During the construction period, Alex from Kaizen Civil Pty Ltd can be contacted on 0421 825 238 for any site related issues.

Yours sincerely

Lee Dowler
UNIT MANAGER TRANSPORT

15 / 03 / 2024

cc: Ward Councillors

Figure 1: Raised threshold treatment in Northumberland Rd and Refuge Island Modification in Rhodes Pde

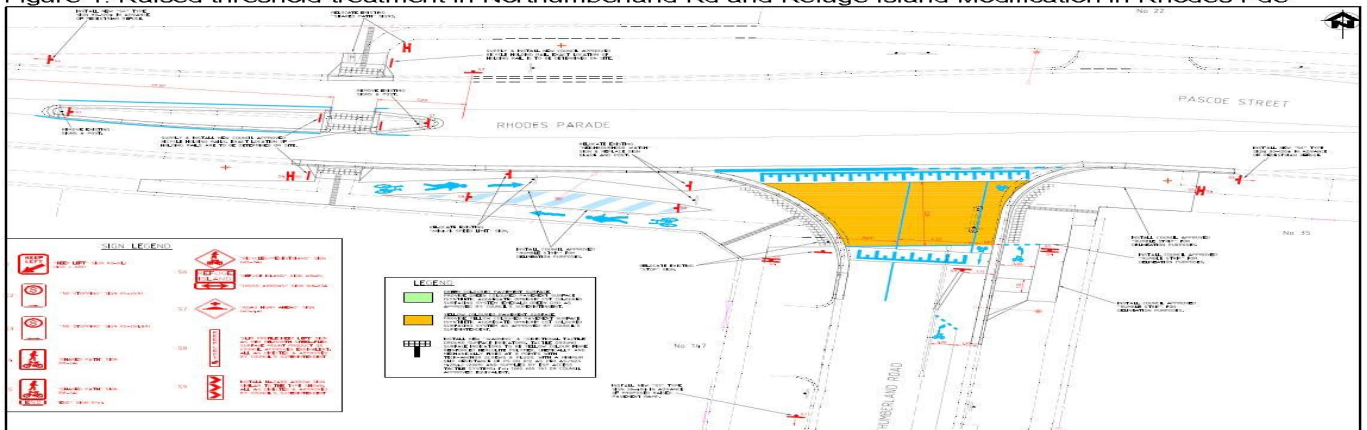
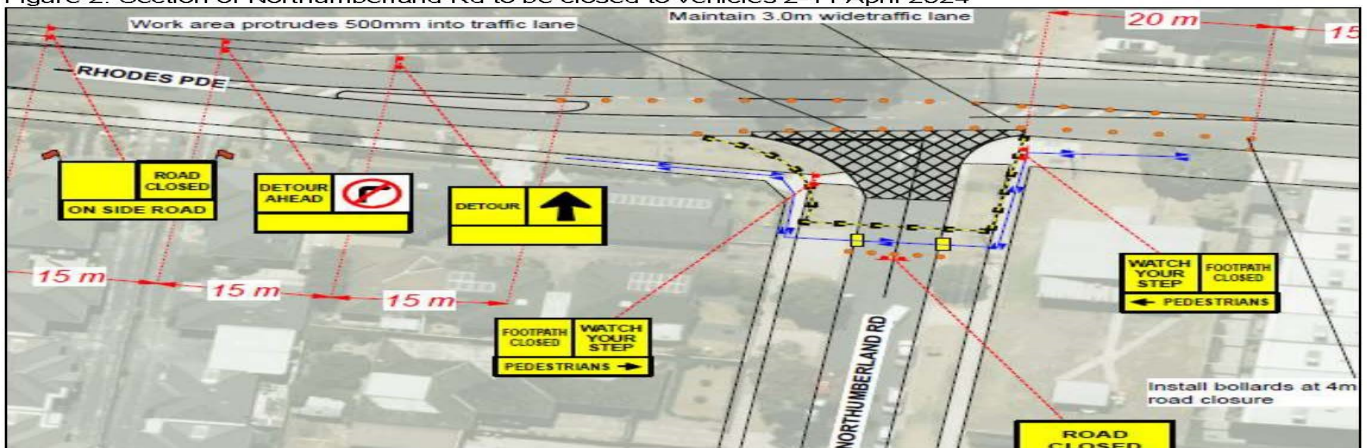


Figure 2: Section of Northumberland Rd to be closed to vehicles 2-11 April 2024



2024 Photo Day

Online and Envelope Order Instructions

Dear Parents and Students of Westbreen Primary School,

Your school photo day is on 25-03-2024 and your school has chosen to order via online and/or envelopes which has been or will be distributed to every student. Therefore, it is important that the ordering instructions below are followed, and all students are photographed regardless of purchase.

**** IMPORTANT PLEASE NOTE – ONLINE ORDERING FOR SIBLING PHOTOS WILL CUT OFF ON 24-03-2024 ****

ONLINE ORDERING: Your child's school photos are now available for secure online purchase, please note if you are ordering online, you do not need to return an envelope to the school

4 EASY STEPS TO ONLINE SCHOOL PHOTO ORDERING

- Step 1: [Click Here](#). - For online ordering process for your school - OR - Go to www.advancedlife.com.au before photo day and enter your school code [SYM TXF 14K]
- Step 2: Enter your student's details
- Step 3: Choose the package that best suits your needs (*all orders will be delivered to the school for collection*)
- Step 4: Pay for the photos via the shopping cart (upper right corner of the page)

****Online Orders have a 1.5% merchant fee applied when using Visa, Mastercard or PayPal.**

Please note: If you miss photo day, portrait and group packages can still be ordered online for 7 days afterwards with no late fees. After that time, late orders will require separate processing and handling and therefore will incur a \$15.00 late fee per package.

FAMILY / SIBLING PHOTOS: No envelope required if ordering online

3 EASY STEPS TO ONLINE SCHOOL PHOTO ORDERING

- Go to www.advancedlife.com.au before photo day and enter your school code [SYM TXF 14K]
- Family/Sibling photo orders online close on [24-03-2024]
- Orders can be placed by returning an envelope up until photo day with exact cash amount. (*no change given*)

ORDERING USING AN ENVELOPE:

ENVELOPES WILL BE HANDED TO EACH CHILD, PLEASE SEE THE SCHOOL OFFICE IF YOU HAVE NOT RECEIVED ONE

Step 1: Student Details - Complete the section for student details on the front of the envelope.
(*Please use black or blue pen*).

Step 2: Purchase Details - Complete the purchase details on the front of the envelope.

Step 3: Payment Method - Select your payment method.

Credit Card – Online Only at www.advancedlife.com.au

Cash – Please enclose correct money – no change is given under any circumstances

Please Note: A portrait and a class group photograph will be taken of every student at the school, regardless of purchase. Photographs of your children taken as part of a class group are only permitted to be distributed within their own class. Your child's name will appear on the class group photo. If you **DO NOT** wish your child to be photographed, please contact your school office with your instructions prior to Photo Day.

Please feel free to contact us via email or phone should you have any queries regarding your child's school photo order.

info@advancedlifevic.com.au or 03 9852 1133

Advancedlife Team

2ND HAND UNIFORM SHOP

LAST TUESDAY OF EVERY MONTH

(during school terms)

TIMES: 8.45-9.15AM & 2.45-3.15pm

LOCATION: SCHOOL HALL

We have items of clothing that are NEW with old logo and USED with new logo.

Stock and prices will vary according to condition. Cash payment is preferred.

If you have any 2nd hand uniform items that you would like to donate that are in good condition they will be gratefully accepted.

LOST PROPERTY: Unfortunately, the Lost Property Box is always overflowing so please ensure you **label all your child's school uniform items**. The box is gone through fortnightly and anything that is unnamed becomes part of my 2nd hand uniform stock or gets donated to charity.

If you are having any trouble financing any items of uniform, please call or come and see me and I'll see what we can do to help you out.

Ms Georgie


Mental Health & Wellbeing Leader



March 2024

Mon	Tue	Wed	Thu	Fri	Sat	Sun
				1*Interschool Sport Grade 5/6 home	2	3
4*First full week for Foundation students @ school	5*Breakfast club	6*Breakfast club	7*Breakfast club	8*Interschool Sport Grade 5/6 away	9	10
11*LABOUR DAY PUBLIC HOLIDAY	12*Breakfast club *1-2 Excursion Westbreen Creek	13*Breakfast club *Naplan Reading	14*Breakfast club *Naplan Reading	15*Interschool Sport Grade 5/6 home	16	17
18*School Council *Naplan Language Conventions	19*Breakfast club *Naplan Numeracy	20*Breakfast club	21*Breakfast club *Harmony Day (orange)	22*National Ride2School Day *5/6 Asia	23	24
25*School Photos	26*1-2 Excursion Westbreen Creek	27	28*3/4 Continents of South America and Africa EXPO *Last day of Term 1 Finishing @ 2:15pm	29*GOOD FRIDAY	30	31

April 2024

Mon	Tue	Wed	Thu	Fri	Sat	Sun
1*Easter Monday	2*School Holidays	3*School Holidays	4*School Holidays	5*School Holidays	6	7
8*School Holidays	9*School Holidays	10*School Holidays	11*School Holidays	12*School Holidays	13	14
15*First day of Term 2 starting @ 9:00am *MSO Incursion Grade F -2 AM & 3-6 PM	16	17	18	19	20	21
22	23 *Breakfast club	24 *Breakfast club	25*ANZAC DAY Public holiday 	26	27	28
29	30*Breakfast club					